

# Configuring a Netgear Router Basic Configuration Steps

# Configuring Your Router

## STEP 1 (a): Connect Your PC to the Router

- Unbox the router and power up the router.
- Connect the Kovai Fibernet internet cable to the WAN/Internet port(different coloured port) of the router.
- An extra LAN cable will be available with the router, take LAN cable connect one end to the LAN port(1-4) of the router(any one port) and one end to the PC or Laptop.
- In the system press key & R key together to open Run dialog box.
- Type ipconfig on the command prompt(Black screen) . The default gateway of the LAN or Ethernet adapter will be the Router address. (Ex:192.168.1.1)

```
C:\Users\USER>ipconfig

Windows IP Configuration

Wireless LAN adapter Wireless Network Connection:

    Media State . . . . . : Media disconnected
    Connection-specific DNS Suffix . : ATRIA

Ethernet adapter Local Area Connection:

    Connection-specific DNS Suffix . :
    IPv4 Address. . . . . : 192.168.1.101
    Subnet Mask . . . . . : 255.255.255.0
    Default Gateway . . . . . : 192.168.1.1
```

## STEP 1 (b): Connect Your Mobile

- Switch on the router and connect KOVAI FIBERNET internet cable to the WAN/Internet port of the router.
- Go to setting in the Mobile, turn on Wi-Fi and wait until the mobile detects router name press the router name to connect.
- If the router is already configured and the Wi-Fi password is known then go to settings in the Mobile.
- Under “Wireless and Networks”, press Wi-Fi make sure "Wi-Fi" is turned on.
- Wait until the mobile detects router name press the router name if prompted enter the Wi-Fi password and press Connect.

# NOTE

- Every Router Configuration has two parts
  - Configuring the Internet Part, where we tell the Router how to connect to the internet.
  - Configuring the Wi-Fi Part, where we decide the name and password with which we connect to the Router.
- Internet Configuration shown here will guide to Configure the Router in PPPoE.
  - This will enable you to browse internet directly, every time you connect to the router. No need to login again and again.
- Wi-Fi Configuration has also been given, in order to ease the process of you connecting to the Router.
  - SSID and Password Creation have been explained.
  - Few high end routers have two bands to work on
  - 2.4 GHz and 5 GHz – 2.4 GHz band provides higher range, but lesser speed.
  - 5 GHz band provides lower range, but higher speed. – Changing Different Wi-Fi Channels
  - Helps in reducing Slow Speed Issues.

# STEP 2: Logging into the Router

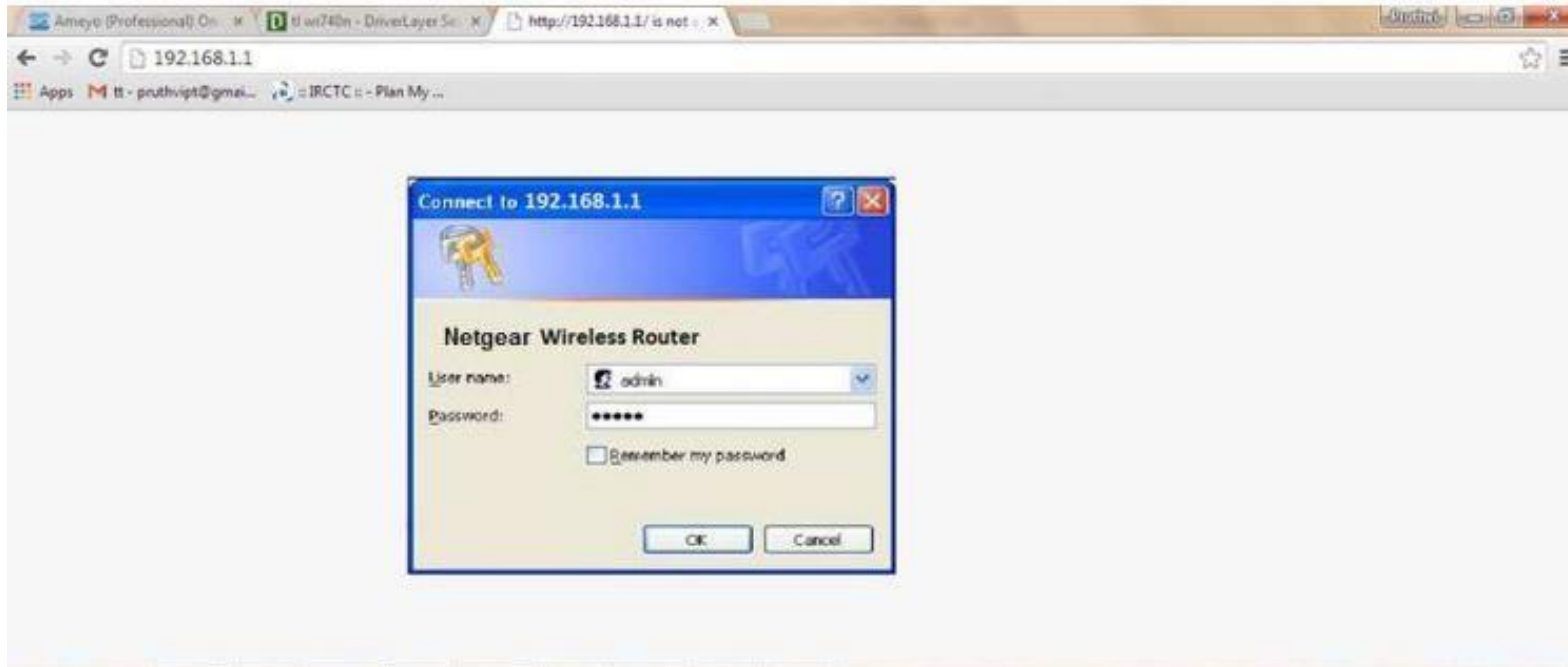
- Open a browser -> Enter the below IP Address in the Address Bar. A login page appears. The usual usernames and passwords are given in the table below.

Router Name	IP Address	Username	Password
Cisco or Linksys	192.168.1.1	admin	admin
D-Link	192.168.0.1	admin	(blank)
TP-Link	192.168.0.1	admin	admin
Netgear	192.168.1.1	admin	password
Belkin	192.168.2.1	Click on Login in Home	(blank)
Tenda	192.168.0.1	admin	admin
i-Ball Baton	192.168.1.1	admin	admin
Digisol	192.168.2.1	admin	1234 or admin
Asus	192.168.1.1	admin	admin

- If all the above credentials do not work, please check the back of the router where the username and password will be mentioned.

## STEP 3(a): Internet Connectivity – PPPoE Configuration

- Step 1 : Open any web browser
- Step 2 : Type Router page address on the address bar(192.168.1.1)
- Step 3 : OK with credentials



# STEP 3(b): Internet Connectivity – PPPoE Configuration

- Home Page on Logging In



# Internet Connectivity – PPPoE Configuration

- Step 1: Enter the portal username in the PPPoE username field
- Step 2: Enter the portal password in the PPPoE password
- Step 3: Enter the Service Name
- Click on Apply
- By Default Username & Password is same.

**Basic Settings**

---

Does Your Internet Connection Require A Login?

Yes

No

---

Internet Service Provider PPPoE

---

Login **Portal page**

Password **Username and**

Service Name (If Required) **password**

Idle Timeout (In Minutes) 5

---

Domain Name Server (DNS) Address

Get Automatically From ISP

Use These DNS Servers

Primary DNS [ ] . [ ] . [ ] . [ ]

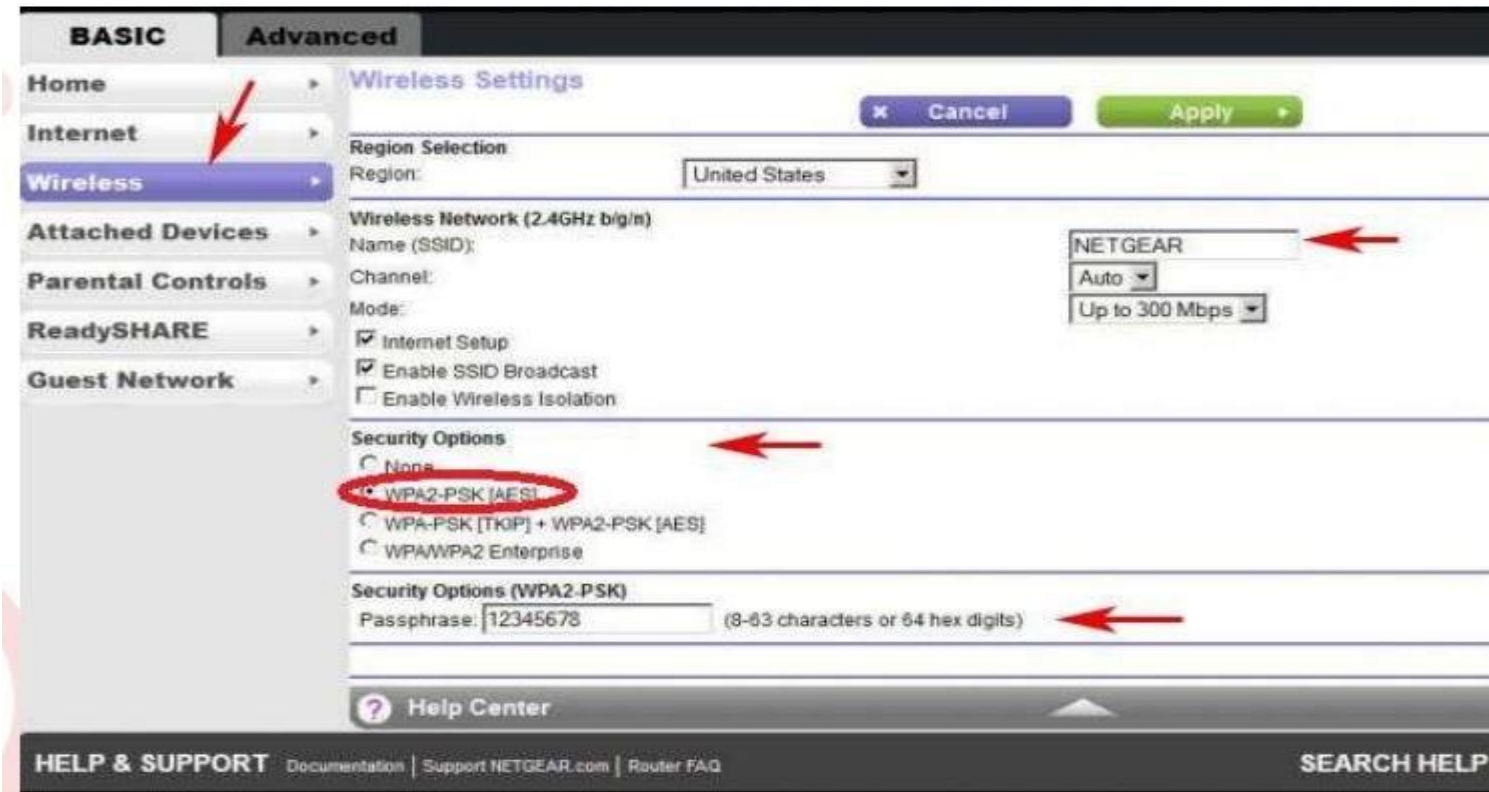
Secondary DNS [ ] . [ ] . [ ] . [ ]

---



## STEP 4: Wi-Fi Connectivity – Router SSID/Password Configuration

- Step 1: Type in your preferred Wi-Fi name in SSID(Network name dialog box). Region Select Asia.
- Step 2: Click on security options dialog box and select WPA2–PSK [AES].
- Step 3: Type in your preferred Wi-Fi password.
- Step 4: click on Apply.



The screenshot shows the 'Wireless Settings' page in a router's web interface. The 'Wireless' tab is selected in the left sidebar. The 'Region Selection' dropdown is set to 'United States'. The 'Name (SSID)' field contains 'NETGEAR'. The 'Channel' is set to 'Auto' and the 'Mode' is 'Up to 300 Mbps'. Under 'Security Options', 'WPA2-PSK [AES]' is selected and circled in red. The 'Passphrase' field contains '12345678'. The 'Apply' button is visible at the top right.

## STEP 5 : Reboot

- After done the configuration.
- Go to Advanced → Advanced Setup -> Reboot the router.

The screenshot displays the NETGEAR genie WNR2000v4 web interface. The 'ADVANCED' tab is selected and circled in red. In the left sidebar, the 'Advanced Setup' menu item is also circled in red. The main content area shows the 'Router Information' section with a green checkmark, containing the following details:

Hardware Version	WNR2000v4
Firmware Version	V1.0.0.40
GUI Language Version	V1.0.0.159
Operation Mode	Router
<b>LAN Port</b>	
MAC Address	28:C6:8E:AA:F1:D2
IP Address	192.168.1.1
DHCP Server	On

Below the Router Information table is a 'Reboot' button. To the right, the 'Internet Port' section is also visible, showing details like MAC Address (28:C6:8E:AA:F1:D3), IP Address (10.1.10.11), and Connection (DHCP). At the bottom, the 'Wireless Settings' and 'Guest Network' sections are partially visible.

## STEP 6 (As and when required): Firmware upgrade

- Advanced>Administration> firmware upgrade > upload the new firmware file > upgrade firmware
- You can choose to download a Firmware version and then upload it offline or choose to download directly from internet itself.

**NETGEAR genie**  
WNR2000v5

Logout  
Firmware Version V1.0.0.28  
Auto

**BASIC** **ADVANCED**

**ADVANCED Home**  
**Setup Wizard**  
**WPS Wizard**  
▶ Setup  
▶ Security  
▼ Administration  
Router Status  
Logs  
Attached Devices  
Backup Settings  
Set Password  
**Firmware Upgrade**

### Firmware Upgrade

Check for new version from the Internet. **Check**

Locate and select the upgrade file on your hard disk.  
**Choose File** No file chosen

Cancel Upload